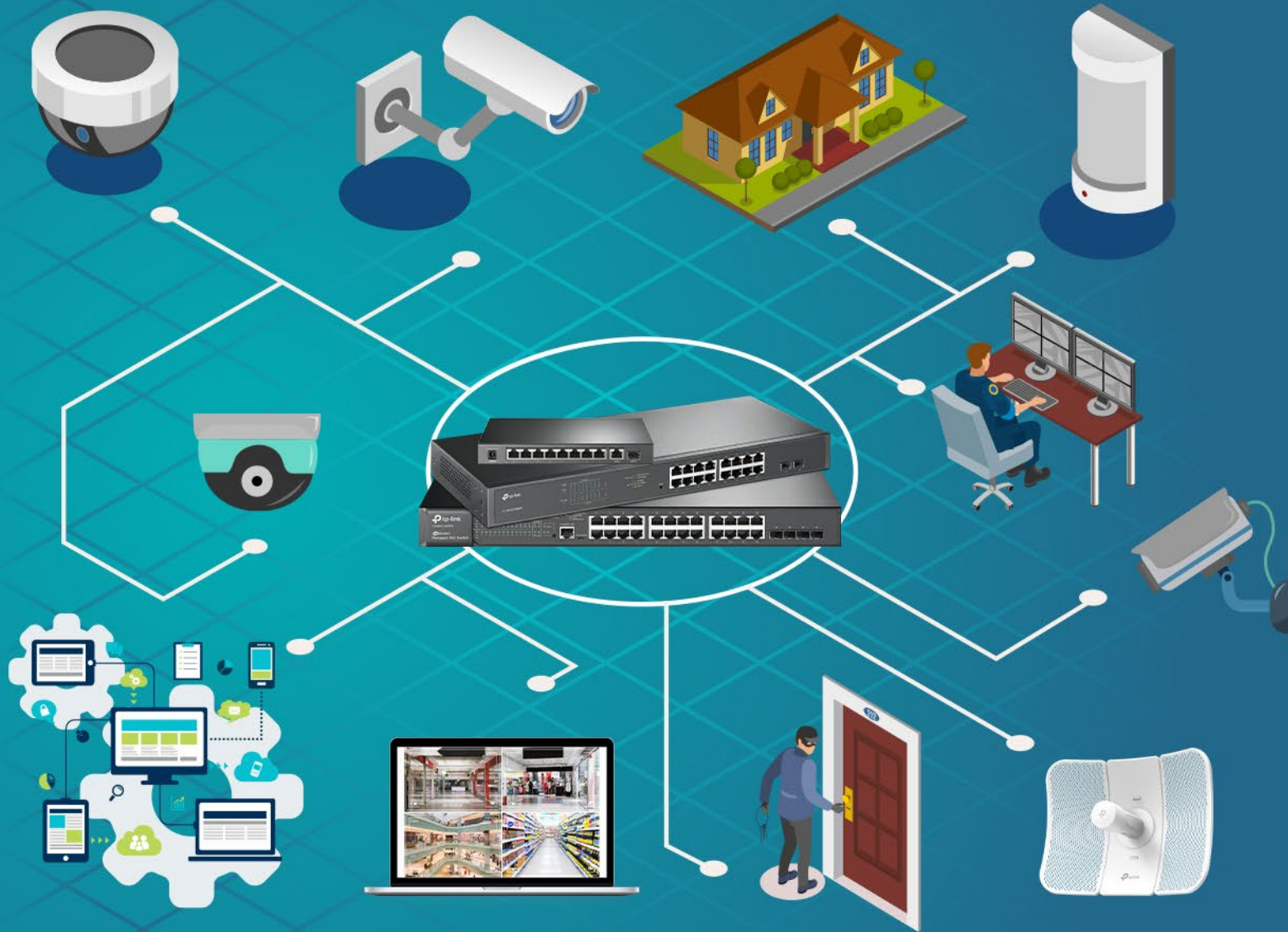




Unified Networking
Switches for IP Based Surveillance Cameras



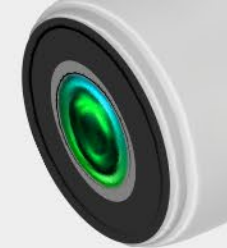
 **Powered and
Managed by
TP-Link Switches**



**Monitor your Premises Even at areas without Electricity
Using Intelligent PoE or PoE+ IP Switches**



Observe Objects' & Humans' Thermal Loads
Using Intelligent PoE or PoE+ IP Switches



15.4W



30W

802.3at (PoE+)

802.3af (PoE)



Lower Infrastructure Costs

A single cable supports both data and power transmission. PoE solutions also require fewer power adapters.



Enhanced Deployment Flexibility

Freedom from fixed power outlets provides more placement options and allows for deployment in complex environments.



Centralized Control

A centralized switch can manage power allocation to all devices.



Simplified Installation

Use existing network infrastructures for rapid deployment, without the need for an electrician.



Benefits of Using PoE/PoE+



How do you want your cabling for your CCTV system?

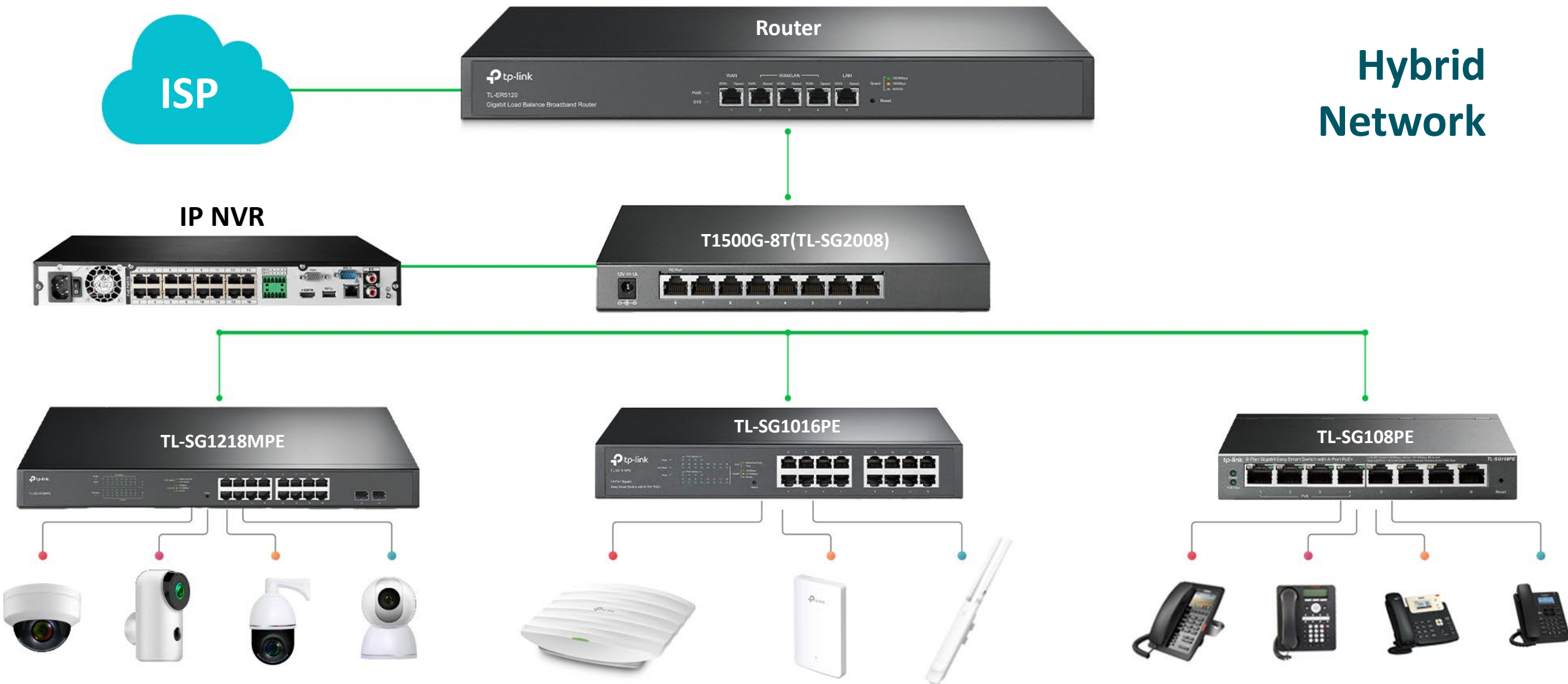


No Matter Of Your IP Network's Architecture We Have The Solutions To Support You Properly



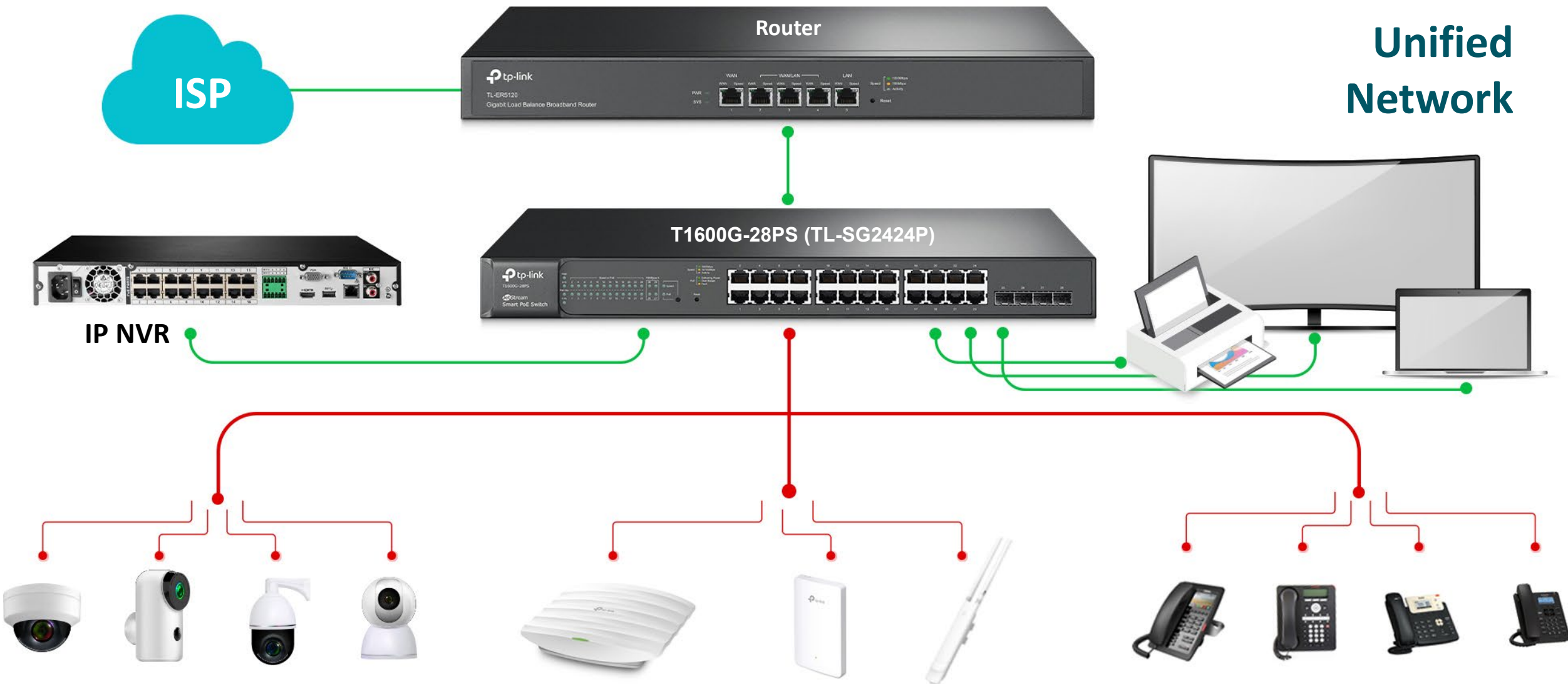


No Matter Of Your IP Network's Architecture We Have The Solutions To Support You Properly





No Matter Of Your IP Network's Architecture We Have The Solutions To Support You Properly





Selecting your TP-Link Switch and Key Differentiators

70%

Detect Correctly Customer Needs
Design a Topology Draft
Verify With Your Reliable Partner
Design Your Network Architecture
Verify With Your Customer

30%

Implement

Personalized Technical Support every time.



Hellenic Omada by TP-Link Hellas Ltd.

TP-Link Hellas Ltd Technical Support Website:

<http://www.tp-link.gr/support.html>

Local GR Technical Support Availability:

from Monday to Friday, 09:00 – 17:30

TP-Link Hellas Ltd Technical Support Email:

support.gr@tp-link.com

TP-Link Hellas Ltd Technical Support Fixed Phone:

+30 210 6148 834



Power Consumption per Port

Choose the PoE standard of switches according to the power consumption of powered devices.
802.3af: max 15.4 W
802.3at: max 30 W

Total PoE Power Budget

Powered devices come with a variety of different wattage demands and the sum total must be less than the switches' total PoE Budget. Power consumption and number of powered devices, line loss, and additional reserved power budget should be considered.

01

Forwarding Rate

Estimate the data traffic according to the powered devices, then determine whether PoE switches with fast Ethernet or PoE switches with Gigabit Ethernet ports are suitable.

02

03

Number of PoE Ports

Check how many PoE ports you need a switch to have to connect all of your network devices. Furthermore, consider the number of actual effective PoE ports.

04

05

Management Demands

Choose managed or unmanaged PoE switches considering the actual network management demands.





VS



Managed

L2/L2+ Switches | Smart Switches | Easy Smart

Un-Managed

Plug & Play



TL-SG1008MP
8-Port GB with 8-Port PoE+ (153W)



TL-SF1005P
5-Port FE with 4-Port PoE (58W)



TL-SG1016PE
16-Port GB with 8-Port PoE+ (150W)



TL-SG1005P
5-Port GB with 4-Port PoE (56W)



TL-SL1218MP
16-Port FE PoE+ with 2 combo SFP (192W)



TL-SF1008P
8-Port FE with 4-Port PoE (57W)



TL-SG1218MPE
16-Port GB PoE+ with 2 SFP (192W)



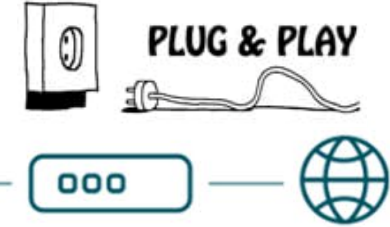
TL-SG1008P
8-Port GB with 4-Port PoE (55W)



Up to 30 W on Each Port
Total 250 W Power Budget



TL-SL1226P

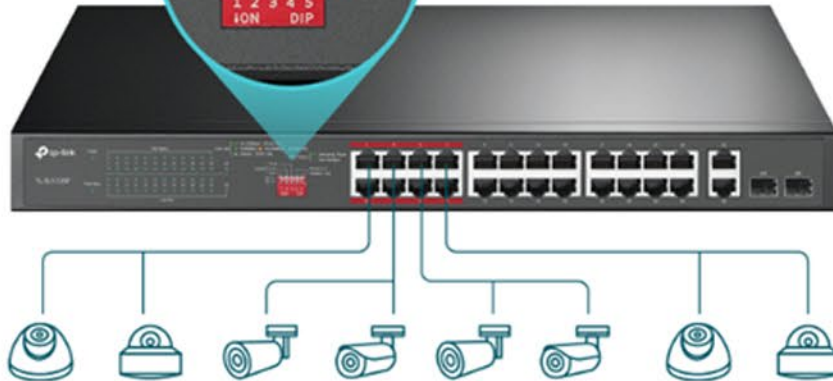


Router

Internet

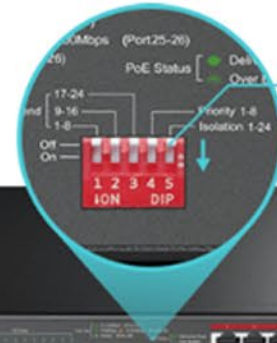


Priority Mode Button



Priority Video Quality Guaranteed

Quality of sensitive applications like video monitoring in critical business areas is guaranteed by offering higher priority options for ports 1-8 when one-touch Priority Mode is on.



Isolation Mode Button



One-Click Traffic Separation for Ports 1-24

With one click, Isolation Mode easily divides traffic for ports 1-24 to avoid snooping and tampering. This enables the switch to isolate broadcast storm, improving LAN security and data transmission.



IP Cameras



TL-SL1218MP



Router



Internet



Remote View



TL-SL1218MP


Up to 250m

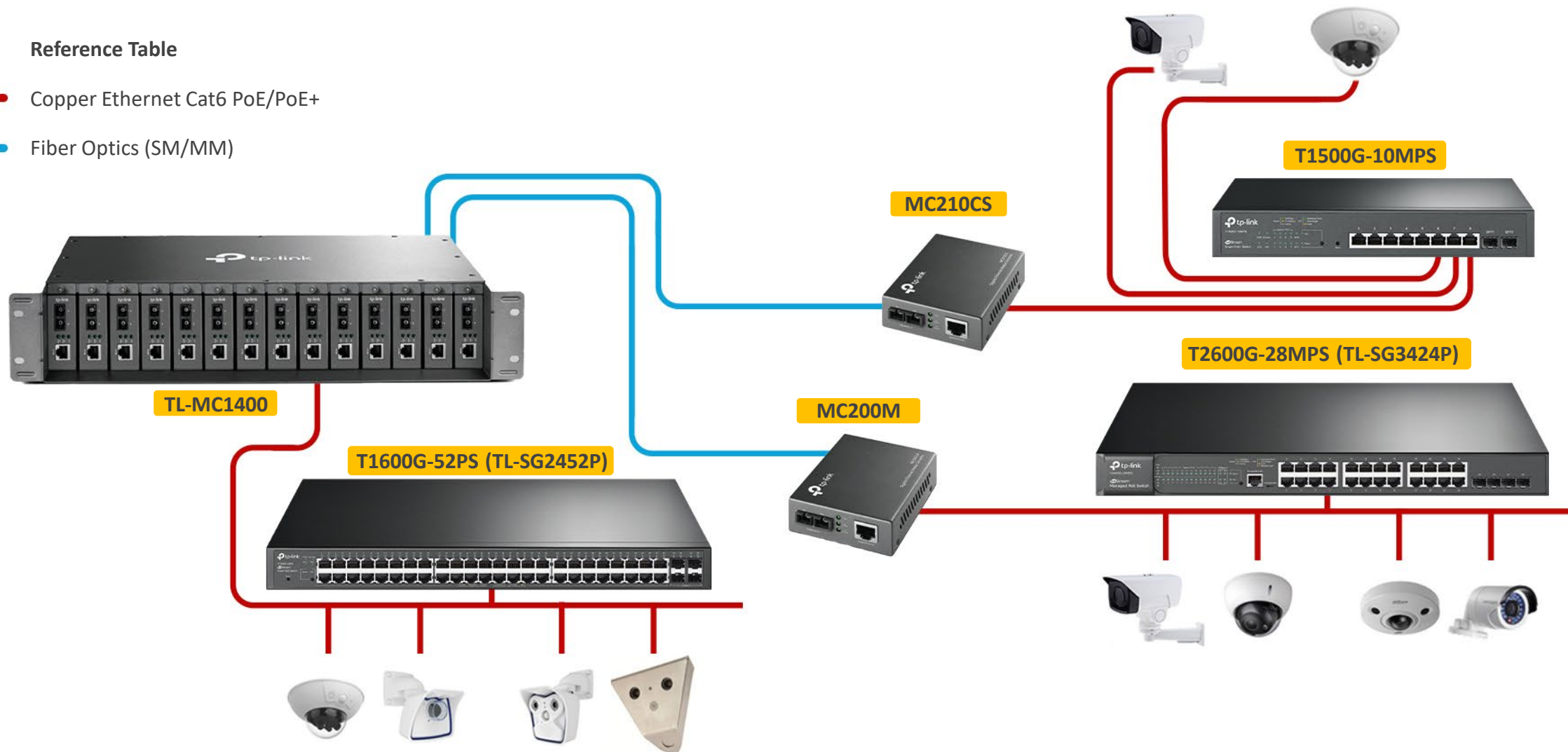


IP Cameras

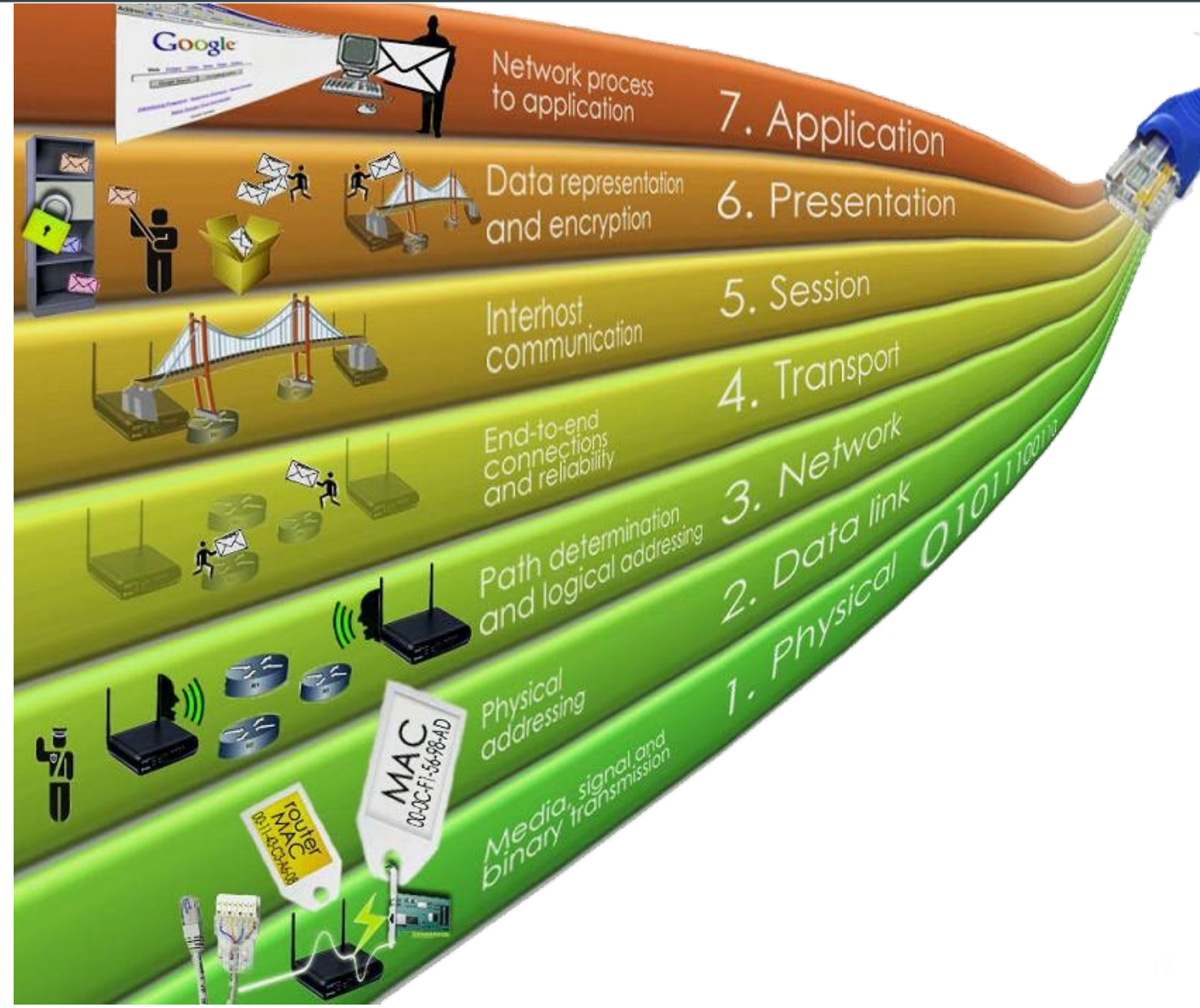
Reference Table

 Copper Ethernet Cat6 PoE/PoE+

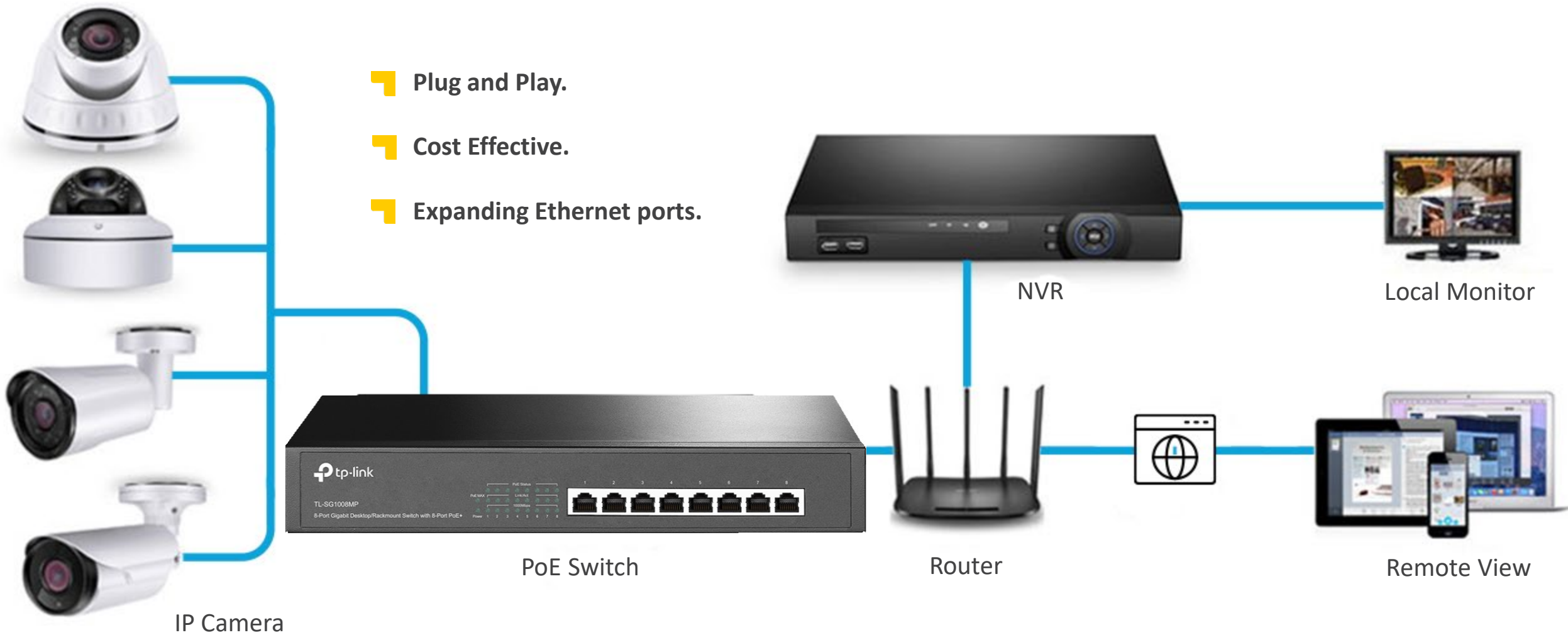
 Fiber Optics (SM/MM)



- ▣ L2+ feature — Static Routing, helps route internal traffic for more efficient use of network resources.
- ▣ Creating VLANs - Segmenting the network into workgroups by creating VLANs.
- ▣ Port Security and Port Speed.
- ▣ L2/L3/L4 QoS and IGMP snooping optimize voice and video application.
- ▣ WEB/CLI managed modes.
- ▣ Manage your LAN traffic
- ▣ Increased Security



- Plug and Play.
- Cost Effective.
- Expanding Ethernet ports.





*These products are being developed and the pictures are design sketches for reference only.

- Provides network monitoring, traffic prioritization and VLAN features.
- Simple network set-up on top of plug-and-play connectivity.
- Web-based user interface and Easy Smart Configuration Utility simplify configuration.
- Simple L2 functions – Link Aggregation, Port mirroring and Cable Diagnostics.



TL-SG108PE

- 8 × GE Ports
- 802.3af
- 4 × PoE Ports
- 55W PoE Power
- Desktop/ Wall Mounting
- Plug and Play
- Intelligent Management
- Additional Functions
- Green Tech
- Fanless

Desktop



TL-SG1016PE

- 16 × GE Ports
- 802.3af/at
- 8 × PoE+ Ports
- 110W PoE Power
- Rackmount / Desktop
- Green Tech
- Intelligent Management
- Additional Functions
- Plug and Play

Rackmount

Easy Smart

- ❏ This switch has full 16 PoE+ 10/100/1000Mbps RJ45 ports
- ❏ High PoE power budget with up to 30W for each PoE port and 192W for all PoE ports and hence can power more high-powered devices such as Access Points, IP Cameras, IP Phones.
- ❏ Advanced Features for higher performance like 802.1Q VLAN, 802.1p QoS and IGMP Snooping.
- ❏ Intelligent power management module like PoE Schedule, PoE Priority, PoE Power Limit.

TL-SG1218MPE

- 16× GE Ports
- 802.3af/at
- 16× PoE+ Ports
- 192W PoE Power
- Rackmount
- Green Tech
- Intelligent Management
- Additional Functions
- Plug and Play
- **Developing**
(ESD: 2019 Q3)



Rackmount

Easy Smart



T1500G-10PS

- 8× GE Ports
- 2× SFP Ports
- 802.3af
- 8× PoE Ports
- 53W PoE
- Desktop
- Fanless

Desktop



T1500G-10MPS

- 8× GE Ports
- 2× SFP Ports
- 802.3af/at
- 8× PoE+ Ports
- 116W PoE
- Rackmount/
Desktop

Rackmount



T1500-28PCT

- 24× FE Ports
- 4× GE Ports
- 2× Combo SFP
Ports
- 802.3af/at
- 24× PoE+ Ports
- 192W PoE
- Rackmount

Rackmount



T1600G-28PS

- 24× GE Ports
- 4× SFP Ports
- 802.3af/at
- 24× PoE+ Ports
- 192W PoE
- Rackmount

Rackmount



T1600G-52PS

- 48× GE Ports
- 4× SFP Ports
- 802.3af/at
- 48× PoE+ Ports
- 384W PoE
- Rackmount

Rackmount

Smart Switch



T2600G-28MPS

- Static Routing L2+ feature helps route internal traffic for more efficient use of network resources
- IP-MAC-Port-VID Binding, ACL, Port Security, DoS Defend, Storm Control, DHCP Snooping, 802.1X Authentication and Radius provide robust security strategies
- L2/L3/L4 QoS and IGMP Snooping optimize voice and video applications
- IPv6 support with dual IPv4/IPv6 stack, MLD Snooping and IPv6 Neighbor Discovery
- Web, CLI (Console Port, Telnet, SSH), SNMP, RMON and Dual Image bring powerful management capabilities

- 24 × GE Ports
- 4 × SFP Ports
- 802.3af/at
- 24 × PoE+ Ports
- 384W PoE
- Rackmount

Rackmount

L2+ Managed Switch

- ▣ L2+ feature — Static Routing, helps route internal traffic for more efficient use of network resources.
 - ▣ T2600G-28MPS
 - ▣ T1600G-52PS
 - ▣ T1600G-28PS
- ▣ Creating & Managing VLANs.
- ▣ IP-MAC-Port-Binding, ACL, Port Security, DoS Defend, Storm control, DHCP Snooping, 802.1X Authentication and Radius provide you robust security strategies.
- ▣ L2/L3/L4 QoS and IGMP snooping optimize voice and video application.
- ▣ WEB/CLI managed modes



Surveillance Switches

Model	T2600G-28MPS	T1600G-52PS	T1600G-28PS	T1500G-10MPS	T1500G-10PS	T1500-28PCT	TL-SG1218MPE*	TL-SG1016PE	TL-SG108PE	TL-SG1008MP	TL-SG1008P	TL-SG1005P	TL-SL1226P*	TL-SL1218MP*	TL-SF1009P*	TL-SF1008P	TL-SF1005P	
Layer	L2+	Smart					Easy Smart				Unmanaged							
Port	GE	GE				FE	GE				GE			FE				
PoE Standard	802.3af/at	802.3af/at			802.3af		802.3af/at		802.3af	802.3af/at	802.3af		802.3af/at			802.3af		
PoE Port	24× PoE+	48× PoE+	24× PoE+	8× PoE+	8× PoE	24× PoE+	16× PoE+	8× PoE+	4× PoE	8× PoE+	4× PoE	4× PoE	24× PoE+	16× PoE+	8× PoE+	4× PoE	4× PoE	
PoE Power Budget	384W	384W	192W	116W	53W	192W	192W	110W	55W	126W	55W	56W	192W (TBD)	192W	67W (TBD)	57W	58W	
Extend Mode	-	-	-	-	-	-	-	-	-	-	-	-	•	•	•	-	-	
Priority Mode	-	-	-	-	-	-	-	-	-	-	-	-	•	•	•	-	-	
Upgrading (2020Q1)	TBD	TBD	250W+	150W+	• 60W+ • PoE+	250W+	250W+	150W+	• 60W+ • PoE+	150W+	• 60W+ • PoE+	• 60W+ • PoE+	250W+	250W+	-	• 60W+ • PoE+ • Extend Mode • Priority Mode	• 60W+ • PoE+ • Extend Mode • Priority Mode	

*These products are being developed



Best in Class for Surveillance (CCTV)



Key Points to Consider

- Camera Compability (PoE or PoE+)
- Range of the camera from the switch
- PoE Power Budget
- Warranty of the Switch
- Managed or Unmanaged
- Number of Ports

TL-SL1218MP

- Extend Mode Up to 250m data and power transmission
- Priority mode for port 1-8 to guarantees the quality of sensitive applications like video monitor.

- 16 PoE+ 10/100Mbps RJ45 ports
- High PoE power budget with up to 30W for each PoE port and 192W for all PoE ports
- Easy to use, with no configuration and installation needed

What does TP-Link Surveillance PoE Bring to You



Comprehensive Selection

Managed (L2, Smart, Easy Smart) and Unmanaged PoE switches, PoE adapters, PoE injectors, PoE splitters, and PoE access points are provided.



Extend Mode

Supports data and power transmission up to 250 m away, particularly ideal for surveillance cameras.



Flexible Deployment

Freedom from fixed power outlets provides more placement options and allows for deployment in complex environments.



Lower Infrastructure Costs

A single cable supports both data and power transmission. PoE solutions also require fewer power adapters.



Intelligent Power Management

Ensures the high priority port's power supply and protect the device from power overload operation.

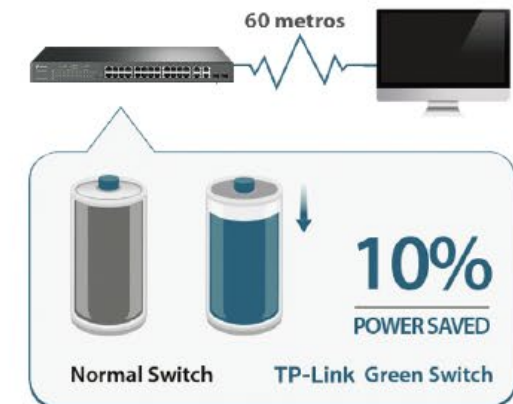
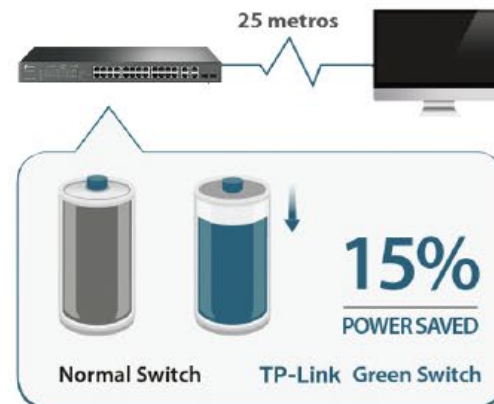
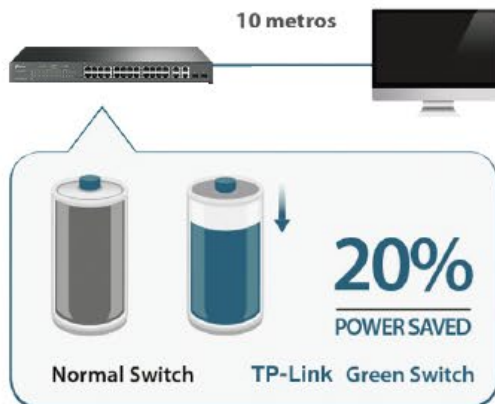
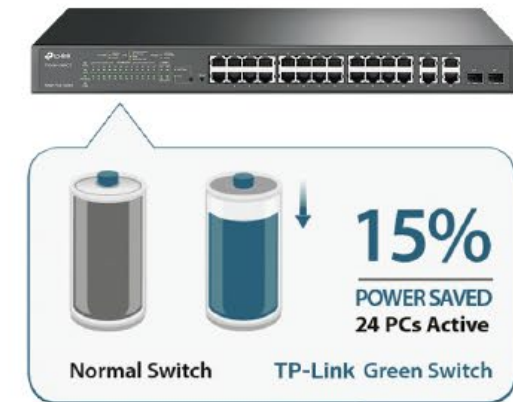
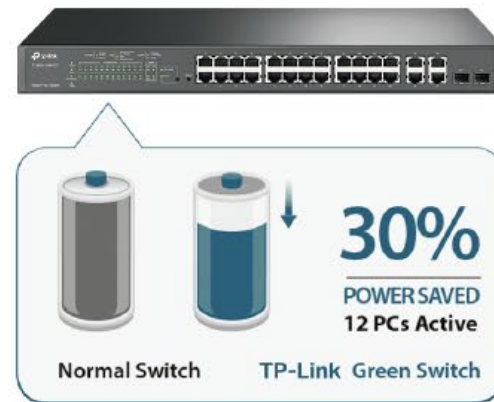
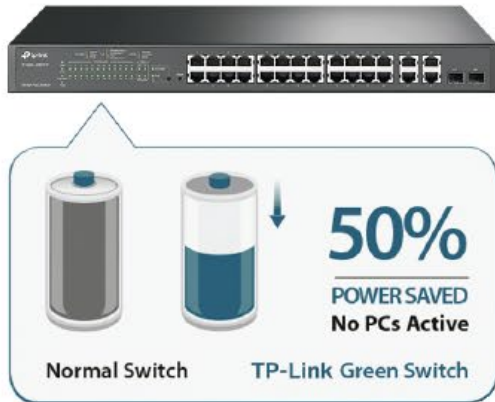


Advanced Functions*

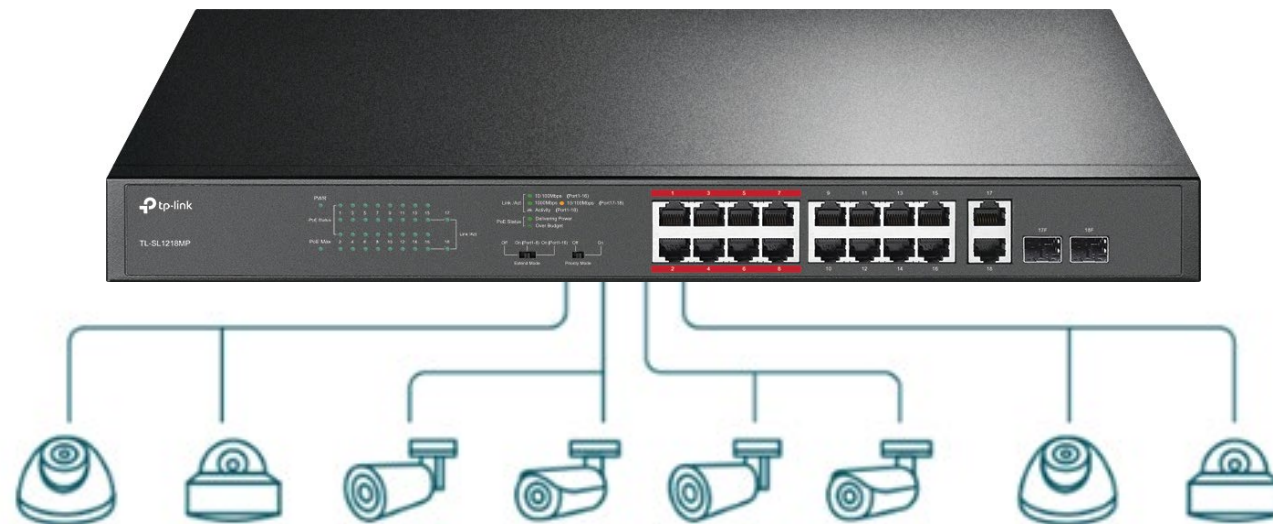
PoE support together with high-performance static routing, enterprise-level QoS, advanced security features and a choice of Layer 2 management options.

*Functions vary according to the type of PoE switches.

TP-Link power saving technology helps you build your network with less investment. What's more, TP-Link consciously strives to commit to reducing our own environmental footprint, so as to protect our environment for now and the future.



- Hardware and Software Specifications of our Switches.
- Abundant Advanced Features
- Dedicated Local Technical Support.
- Secure Networking
- Exclusive Offers and Sales Support.
- Reliability
- Full Product Range from L2+ to Unmanaged PoE Switches
- Business-Grade products are covered by lifetime warranty



At Your Disposal